

Regency Cthulhu

Dark Designs in Jane Austen's England

KEEPER MAP PACK

Regency Cthulhu © 2022 Chaosium Inc. All rights reserved.

Call of Cthulhu, Chaosium Inc., and the Chaosium dragon are registered trademarks of Chaosium Inc.

Pulp Cthulhu is a trademark of Chaosium Inc.

Call of Cthulhu © 1981–2022 Chaosium Inc. All rights reserved.

Pulp Cthulhu © 2016–2022 Chaosium Inc. All rights reserved.

This material is protected under the copyright laws of the United States of America. Reproduction of this work by any means without written permission of Chaosium Inc., except for the use of short excerpts for the purpose of reviews and the copying of character sheets, maps, and handouts for in-game use, is expressly prohibited.

www.chaosium.com





SCOTLAND

A MAP OF
ENGLAND
1810

NORTHUMBERLAND

Newcastle Upon Tyne

CUMBERLAND

Durham
• DURHAM

WESTMORELAND

YORKSHIRE

• York

• Leeds

LANCASHIRE

Manchester
• Liverpool

CHESHIRE

ENGLAND

DERBYSHIRE

NOTTINGHAM
SHIRE
Nottingham

LINCOLNSHIRE

• Lincoln

SHROPSHIRE

Birmingham

WORCESTER
SHIRE

WARWICKSHIRE

LEICESTER
SHIRE

RUTLAND

NORTHAMPTONSHIRE

HUNTINGDONSHIRE
Cambridge

NORFOLK

SUFFOLK

Dunwich

WALES

CARDIGANSHIRE

CARMARTHENSHIRE

PEMBROKE
SHIRE

GLAMORGAN
SHIRE

MONMOUTH
SHIRE

DEVON

CORNWALL

Plymouth

SOMERSET

DORSET

WILTSHIRE

Salisbury

HAMPSHIRE

Winchester

Southampton

Portsmouth

THE ENGLISH CHANNEL

BUCKINGHAMSHIRE

BERKSHIRE

Oxford

ESSEX

London

HERTFORD
SHIRE

ESSEX

SURREY

KENT

Dover

SUSSEX

Brighton

FRANCE

TARRYFORD

Town of Tarryford. Pop. 800

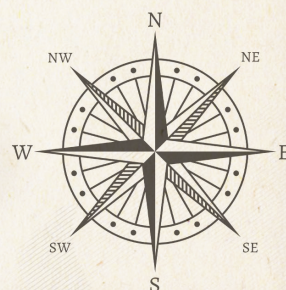
Explanations

1. The Four Feathers
2. Salsmith Bakery
3. Johnson's Blacksmith and Carriage House
4. Banham's Ale House
5. Fortham's Drapers
6. Elstone Muslins
7. Carlton's Apothecary
8. Dr. Parsons' Surgery
9. St. Bridget's Church

KEEPER NOTES

- A) Abandoned house
B) Underground chamber
C) Mrs. Barrendale's house
D) The Pillings
E) Sam Higson's house
F) The Tavistocks

Scale 0 25 50 100
Yards



TARRYFORD

and the Surrounding Area

0 100 200 300 yards



EXPLANATIONS

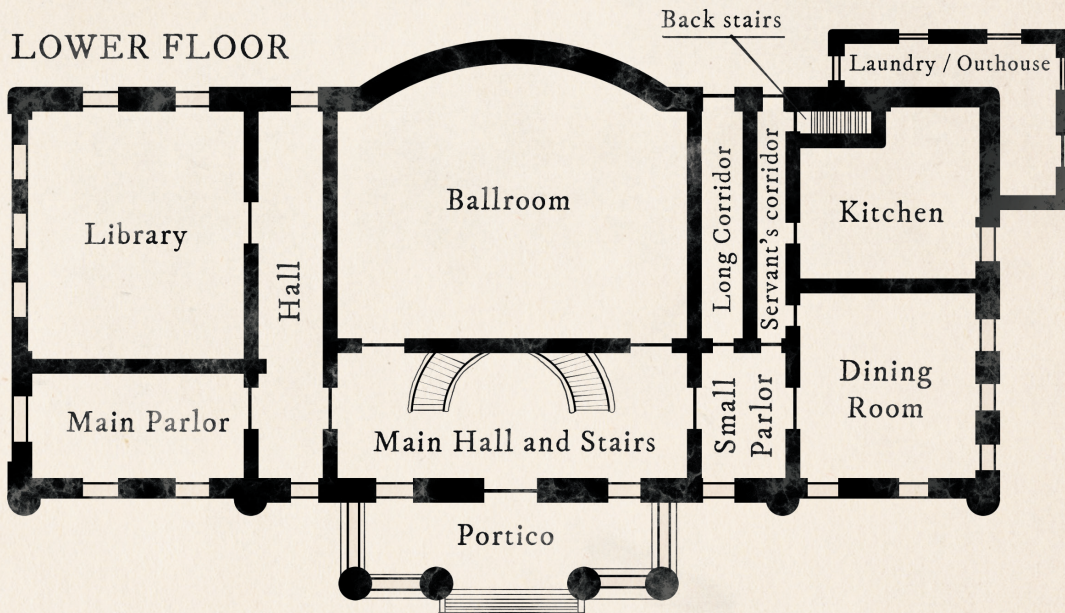
- 1) Sandlake Farm
- 2) Tollingate
- 3) Charlton Abbey
- 4) Mortview House
- 5) Stornley House
- 6) The Four Feathers
- 7) Upper Tarryford Church
- 8) Northlake Hall
- 9) Meg's Cottage
- 10) The Williams' ritual site
- 11) Cuthbertson's Farm

X = Chambers

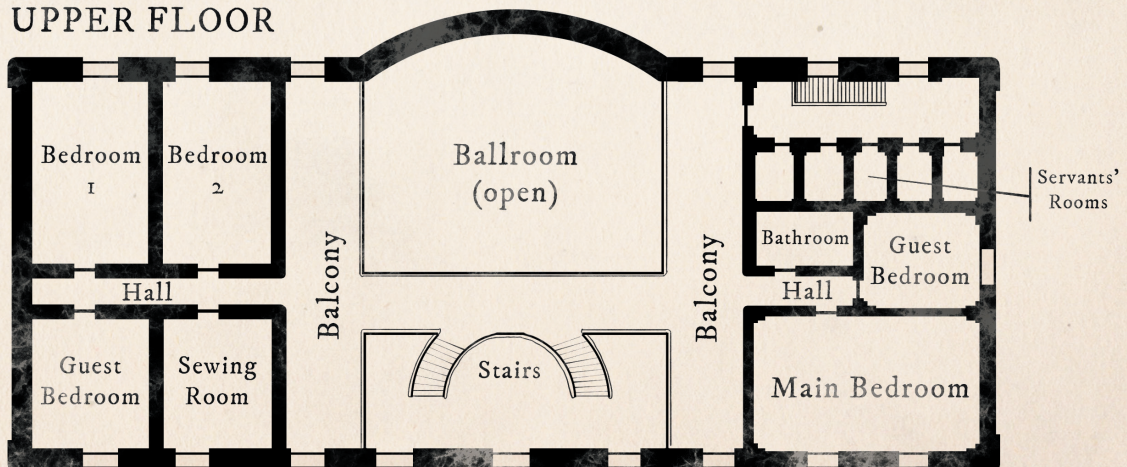
Northlake Hall



LOWER FLOOR

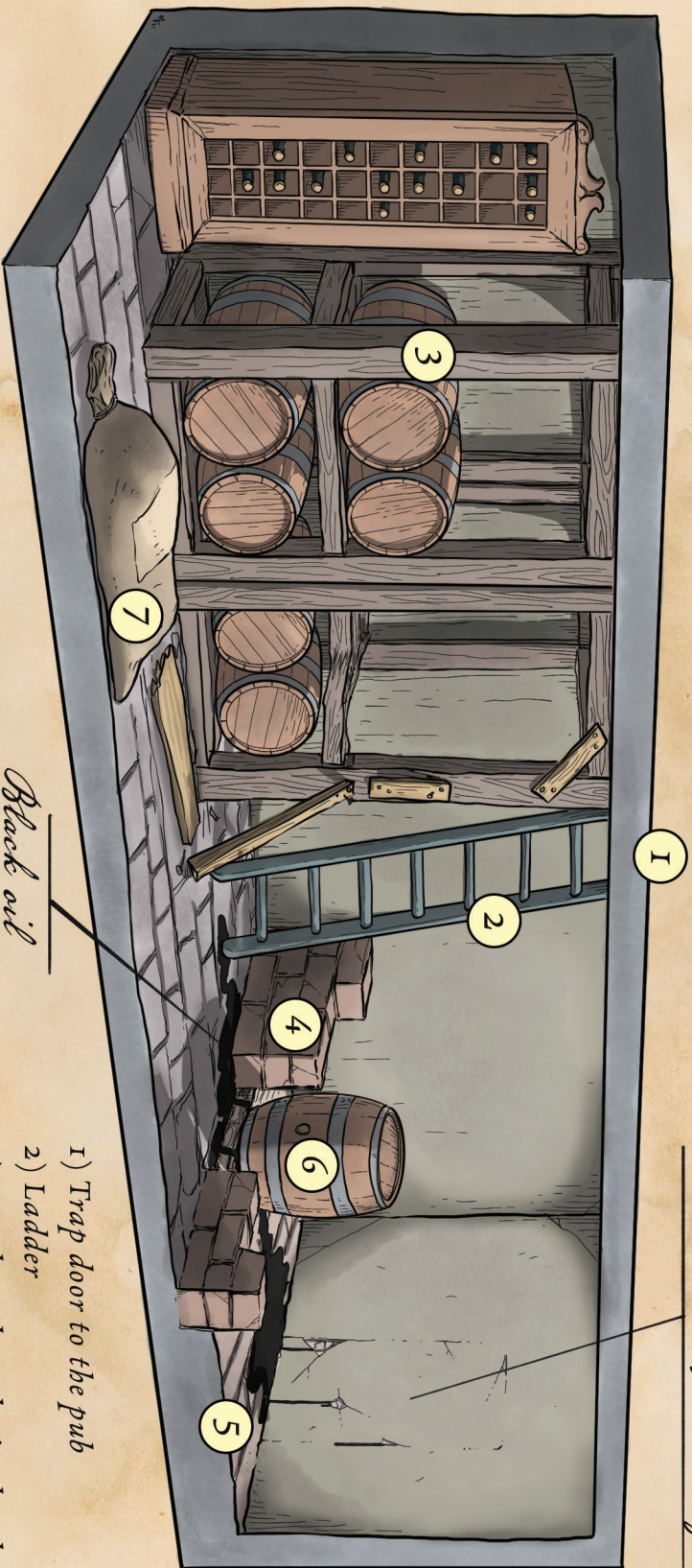


UPPER FLOOR



THE CELLAR BENEATH THE FOUR FEATHERS

Old bucked up doorway



- 1) Trap door to the pub
- 2) Ladder
- 3) Beer barrels and wine bottles
- 4) Low, barely begun wall
- 5) Rough unfinished floor
- 6) Displaced beer barrel
- 7) Hessian sack

TARRYFORD

TOWN OF TARRYFORD, 1913
POPULATION 1,800



EXPLANATIONS

1. The Four Feathers
2. Hayward's Bakery
3. The Smithy
4. Banham's Public House
5. King's Fabrics
6. Gale's Hardware
7. Helena MacDonald
Dispensing Chemist
8. The Surgery
9. St. Bridget's Church
10. Rosie's Tea Shoppe
11. Tarryford Library
12. The Post Office
13. Northlake School
14. Whatley Butchers
15. Fisher Bros. Greengrocers

KEEPER NOTES

A) Underground chamber

SCALE IN IMPERIAL YARDS

