

# A TIME TO HARVEST

DEATH AND DISCOVERY IN THE VERMONT HILLS

## KEEPER MAP PACK

This pack contains Keeper version maps for the campaign. Player-Investigator maps can be found in the separate Handouts pack.

*A Time to Harvest* © 2021 Chaosium Inc. All rights reserved.

*Call of Cthulhu* © 1981–2021 Chaosium Inc. All rights reserved.

*Pulp Cthulhu* © 2016 Chaosium Inc. All rights reserved.

Chaosium Arcane Symbol (the Star Elder Sign) © 1983 Chaosium Inc. All rights reserved.  
Call of Cthulhu, Chaosium Inc., and the Chaosium dragon are registered trademarks of Chaosium Inc.

This material is protected under the copyright laws of the United States of America. Reproduction of this work by any means without written permission of Chaosium Inc., except for the use of short excerpts for the purpose of reviews and the copying of character sheets and handouts for in-game use, is expressly prohibited.





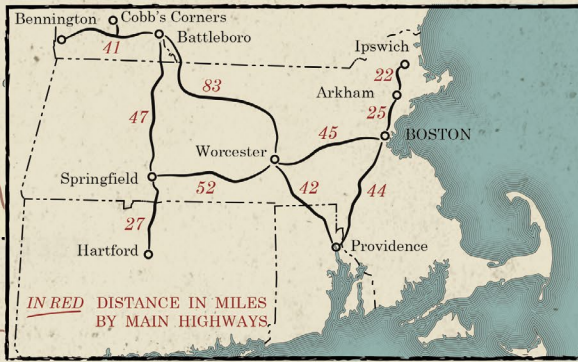
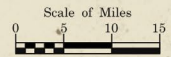


COPYRIGHT 1920  
 701-77th AVE. NEW YORK  
 BIGGS BLDG. WASHINGTON, D.C.

# Vermont

## EXPLANATION OF SIGNS

- Main Thru Auto Routes..... ———
- Connecting Highways..... ———
- State Boudary..... - - - - -
- Rivers..... ———
- Post Office Villages..... ○
- P. O. & Telegraph Office..... ⊙
- Villages having store..... □  
 (but no Post Office)





Broken Hill.

Round Hill.

Rice Hill.

Cooper Hill.

### Advertising Directory

1. Gismend Road Bridge
2. Public Library
3. Cobb's Corners Gazette
4. Karner's Goods
5. Sheriff's Office
6. Bridge
7. Town Hall
8. Civil War Memorial
9. Dr. Owen Perry's Home  
and Practice
10. Jim's Grill
11. School
12. First Baptist Church  
of the Divine Ascension
13. Deputy Cutter's House

Deerfield River, North Branch

View of  
**COBB'S CORNERS**  
VERMONT  
est. 1787



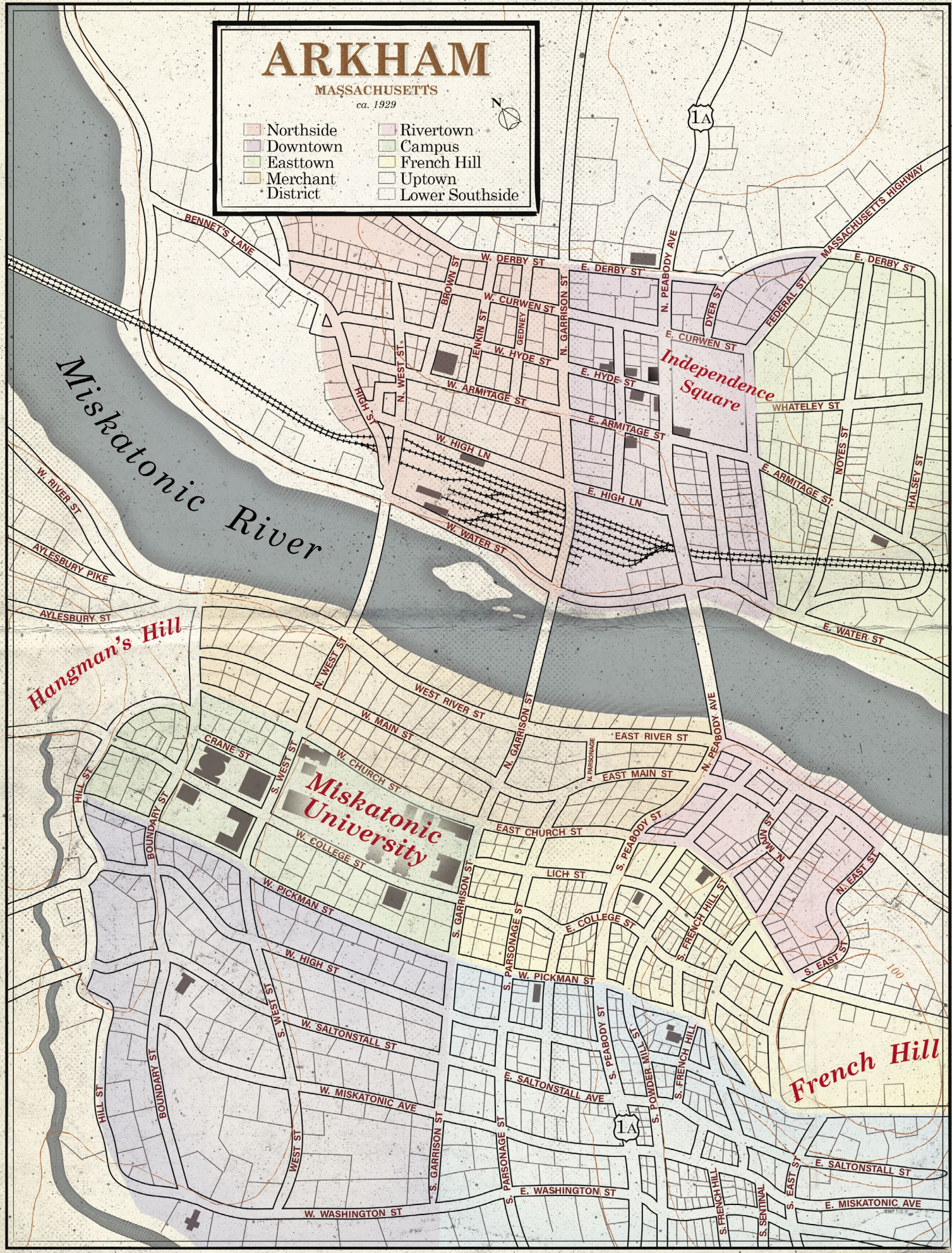
# ARKHAM

MASSACHUSETTS

ca. 1929



- |                   |                 |
|-------------------|-----------------|
| Northside         | Rivertown       |
| Downtown          | Campus          |
| Easttown          | French Hill     |
| Merchant District | Uptown          |
|                   | Lower Southside |

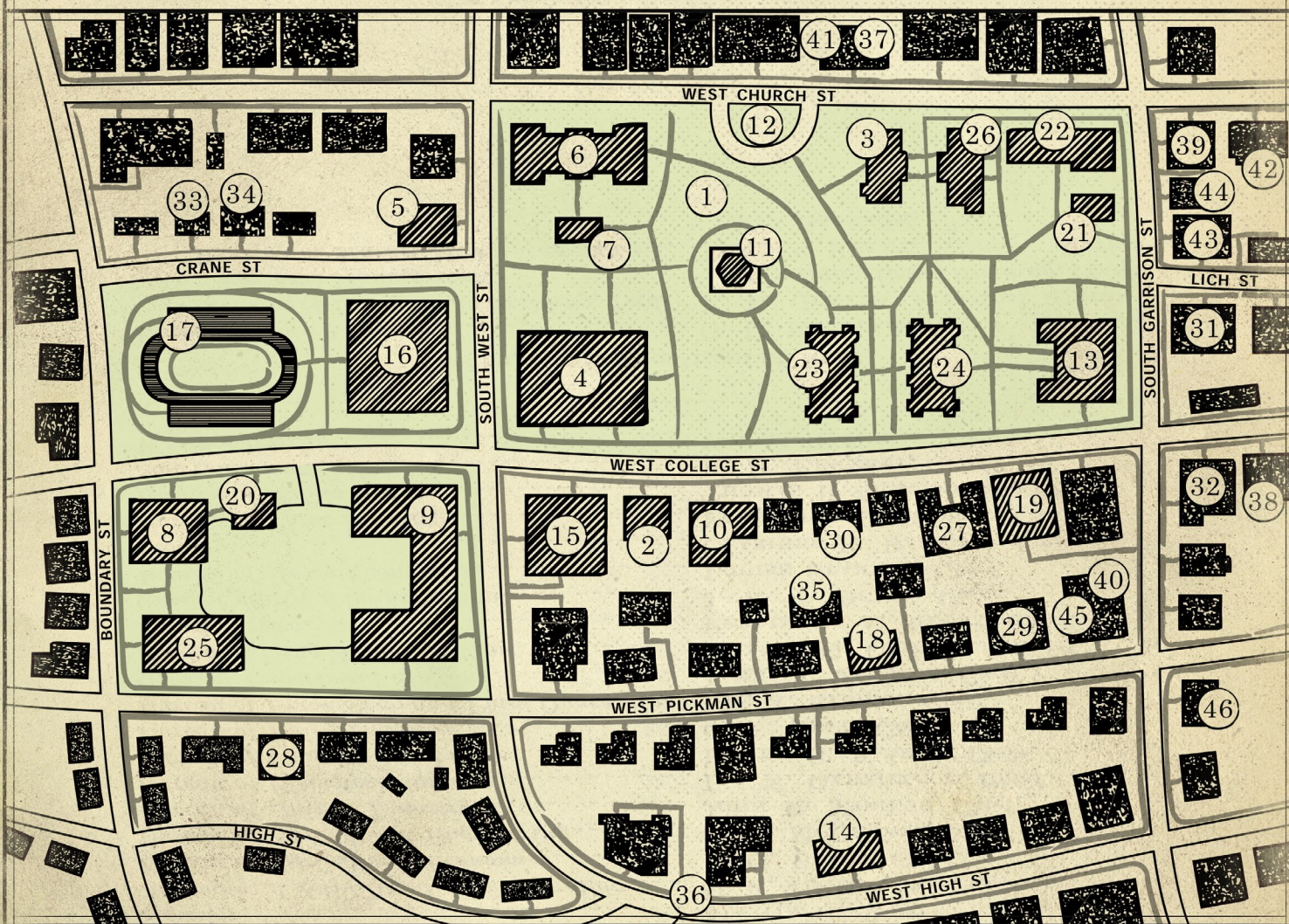






# A Campus Plan of MISKATONIC UNIVERSITY

## Arkham, Massachusetts



### INDEX OF BUILDINGS

- |                                 |                                      |                               |
|---------------------------------|--------------------------------------|-------------------------------|
| 1. University Quad              | 17. Athletics Track                  | 31. University Spa            |
| 2. Hoyt Administration Bld.     | 18. Packer House                     | 32. Paul's Steak House        |
| 3. George Locksley Hall         | 19. University Book Shop             | 33. Miskatonic Athletic Assn. |
| 4. Robert Carter Memorial Hall  | 20. University Laundry               | 34. Miskatonic Miskies H.Q.   |
| 5. Jonathan Edwards Hall        | 21. President's House                | 35. Delta Phi House           |
| 6. Science Hall                 | 22. Derby Hall                       | 36. Sigma Phi House           |
| 7. Charles Tyner Science Annex  | 23. West Dormitory                   | 37. Campus Store              |
| 8. School of Medicine           | 24. East Dormitory                   | 38. Keenan's Laundry          |
| 9. St. Mary's Teaching Hospital | 25. Medical Students' Accommodations | 39. Walgreen's Drugs          |
| 10. Eli Hall                    | 26. Dorothy Upman Hall               | 40. Book Nook                 |
| 11. Copley Memorial Bell Tower  | 27. Hotel Miskatonic                 | 41. Jaywil's Book Store       |
| 12. Statue Lawn                 | 28. Franklin Place                   | 42. Campus Bicycle Shop       |
| 13. Orne Library                | 29. Harriet Botsford Hotel for Women | 43. College Barber Shop       |
| 14. Tabularium                  | 30. Garden Cafe                      | 44. Almen's Flowers           |
| 15. University Exhibit Museum   |                                      | 45. Newport Creamery          |
| 16. Axton Field House           |                                      | 46. Arkham Historical Society |

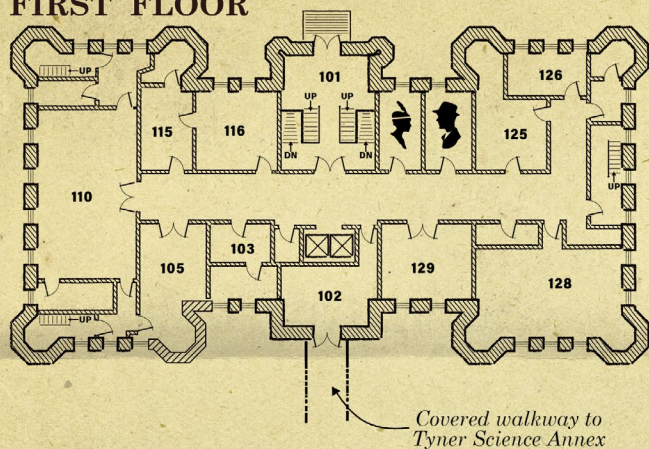




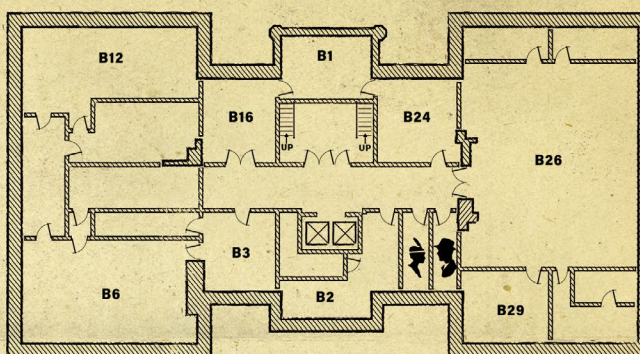
# SCIENCE Hall

## MISKATONIC UNIVERSITY

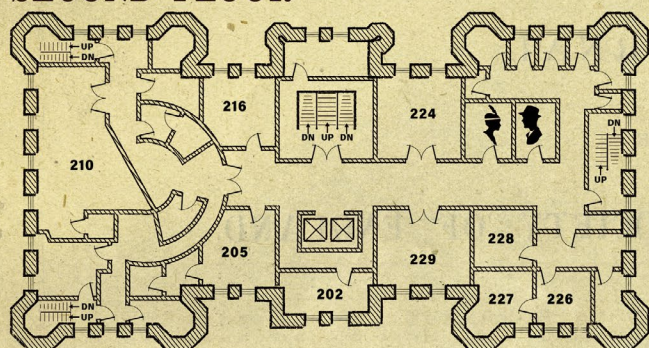
### FIRST FLOOR



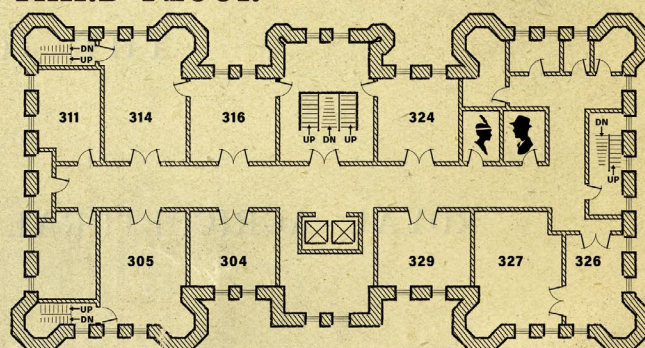
### BASEMENT



### SECOND FLOOR



### THIRD FLOOR



### SELECTIVE DIRECTORY OF ROOMS

#### Basement

B1 - Infirmary	B16 - Hoffman Lecture Hall
B6 - J. J. Badger Organic Chemistry Lab	B24 - Campus Physician
B12 - Dinsdale Lecture Hall	B26 - H. P. Maddox Lecture Hall

#### First Floor

103 - Biology Dept. Head of School	125 - School of Natural Sciences Dept. Head of School
105 - Athena Lecture Hall	128 - M. R. Ogilvie Lecture Hall
110 - Greene Lecture Hall	129 - Study Room
116 - Study Room	

#### Second Floor

205 - School of Applied Sciences Head of School	224 - Mersenne Lecture Hall
210 - Electro-Refinery Laboratory	228 - Astor Dept. of Mathematics Head of School
216 - Study Room	229 - Zebedee Lecture Hall

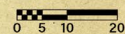
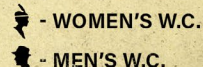
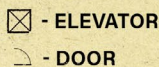
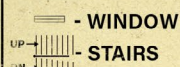
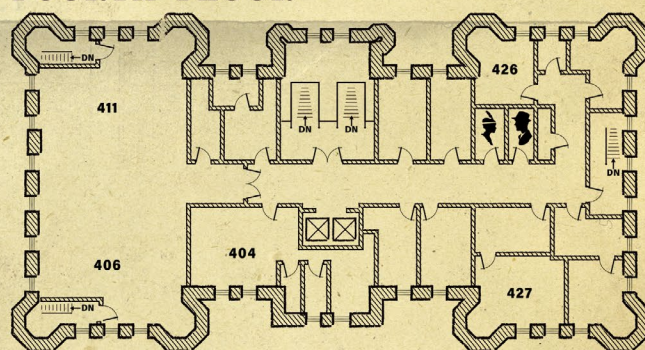
#### Third Floor

304 - Demonstration Suite	324 - Study Room
305 - Science School Library	327 - School of Physical Sciences Head of School
314 - Faculty Room	329 - Study Room
316 - Study Room	

#### Fourth Floor

404 - Graduate Student Lounge
406 - Green House
411 - Reserved Space
426 - Thesis Library
427 - School Course Advisor

### FOURTH FLOOR





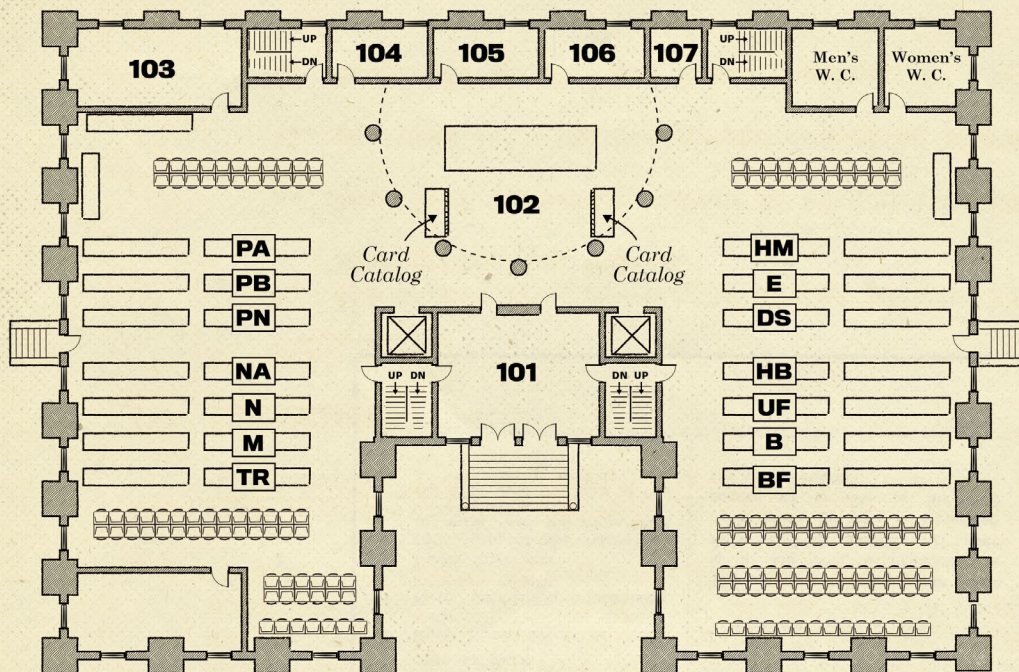
## DIRECTORY OF ROOMS

### First Floor

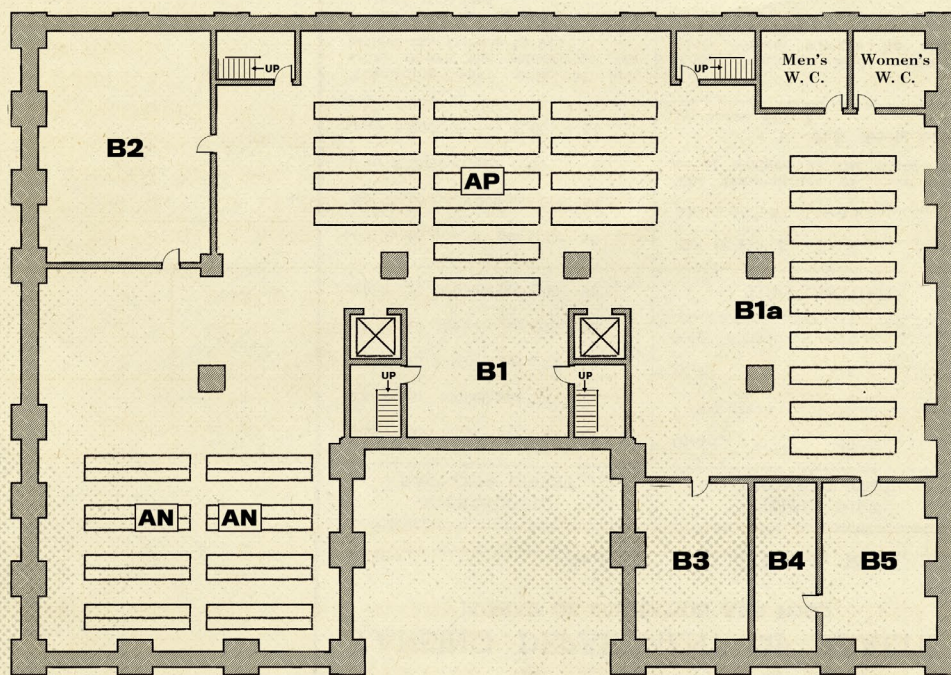
- 101 - Foyer
- 102 - Circulation & Reference
- 103 - Classroom
- 104 - Temp. Office
- 105 - Temp. Office
- 106 - Supplyroom
- 107 - Janitor

### Basement

- B1 - Basement
- B1a - Overflow Shelving
- B2 - Heating and Ventilation
- B3 - Archives & Shipping
- B4 - Records Office
- B5 - Book Repair



FIRST FLOOR



BASEMENT

### GENERAL KEY

- DOOR
- DESK
- STAIRS
- WINDOW
- ELEVATOR
- 102 - ROOM #
- PA - SUBJECT HEADING

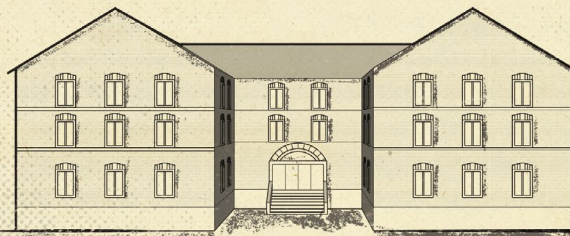
0 5 10 20

DRAWING NO. 1 OF 2

### SUBJECT HEADINGS

- |                          |                    |
|--------------------------|--------------------|
| PA - Classical Languages | HM - Sociology     |
| PB - Modern Languages    | E - History        |
| PN - Literature          | DS - History, Asia |
| NA - Architecture        | HB - Economics     |
| N - Drama                | UF - Civics        |
| M - Music                | B - Philosophy     |
| TR - Photography         | BF - Psychology    |
| AP - Periodicals         |                    |
| AN - Newspapers          |                    |

# ORNE LIBRARY





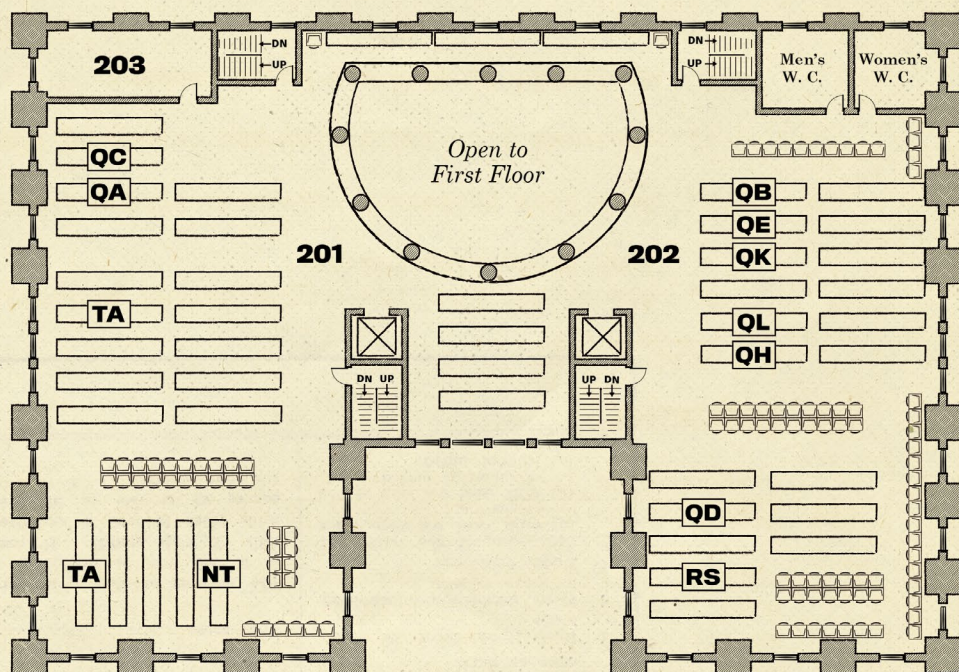
## DIRECTORY OF ROOMS

### Second Floor

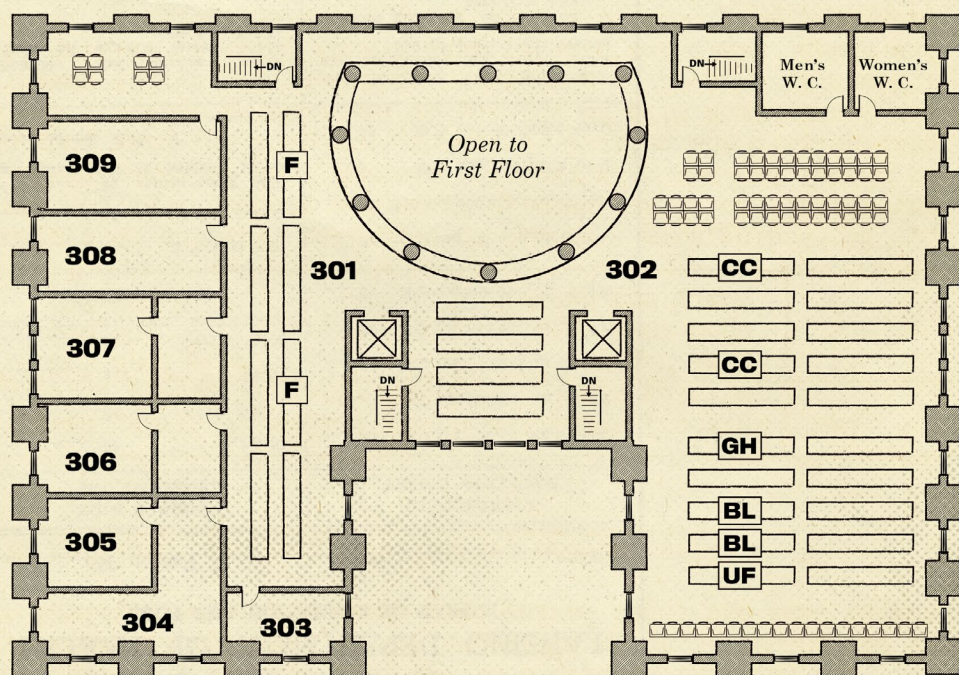
- 201 - North Bookstacks
- 202 - South Bookstacks
- 203 - Staff Room

### Third Floor

- 301 - North Bookstacks
- 302 - South Bookstacks
- 303 - General Documents  
Storage
- 304 - Rare Book  
Collection
- 305 - Restricted  
Collection
- 306 - Dr. Armitage's  
Office
- 307 - Dr. Lianfer's Office
- 308 - Historical Charts  
& Maps Collection
- 309 - Randolph Haskett  
Law Library



SECOND FLOOR



THIRD FLOOR

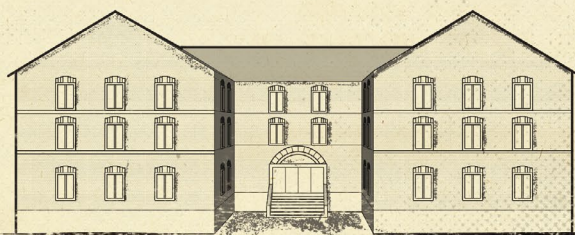
### GENERAL KEY

- DOOR
- WINDOW
- DESK
- ELEVATOR
- STAIRS
- 102 - ROOM #
- PA - SUBJECT HEADING

0 5 10 20

DRAWING NO. 2 OF 2

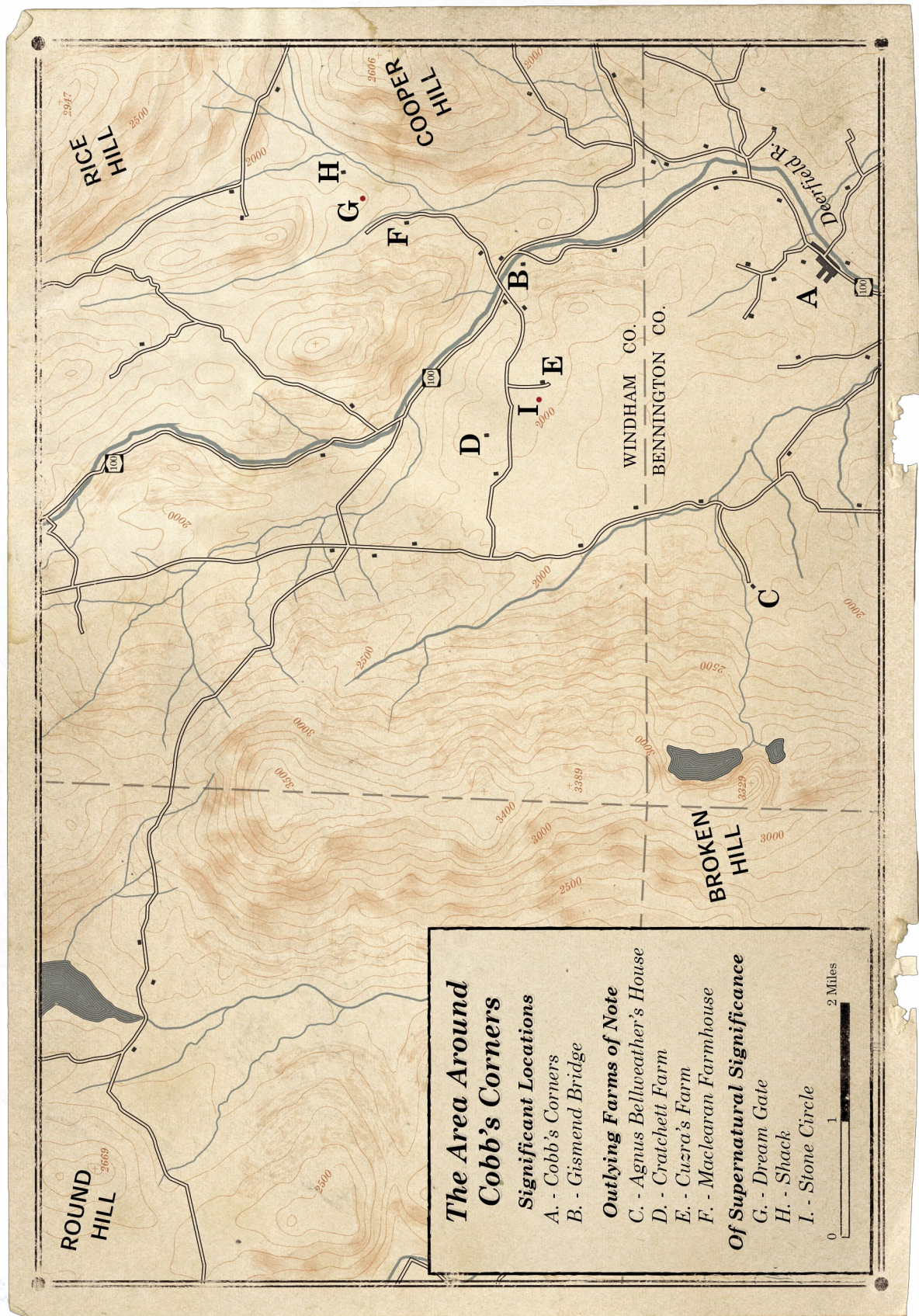
# ORNE LIBRARY



### SUBJECT HEADINGS

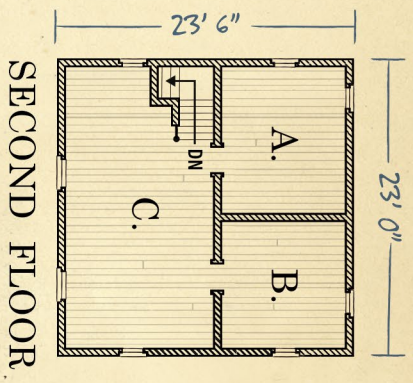
- |                   |                              |
|-------------------|------------------------------|
| QC - Physics      | QD - Chemistry               |
| QA - Mathematics  | RS - Pharmacy                |
| TA - Engineering  | F - Local History            |
| NT - Metallurgy   | CC - Archaeology             |
| QB - Astronomy    | GH - Anthropology            |
| QE - Paleontology | BL - Religion &<br>Mythology |
| QK - Botany       | UF - Occult Science          |
| QL - Zoology      |                              |
| QH - Biology      |                              |



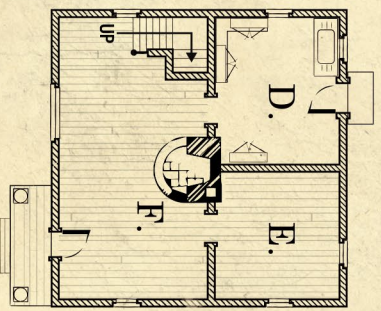




# The Maclearan Farmhouse

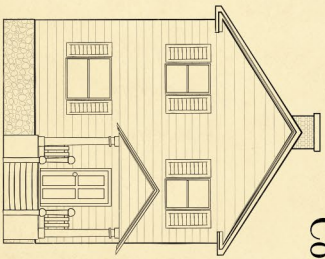


SECOND FLOOR

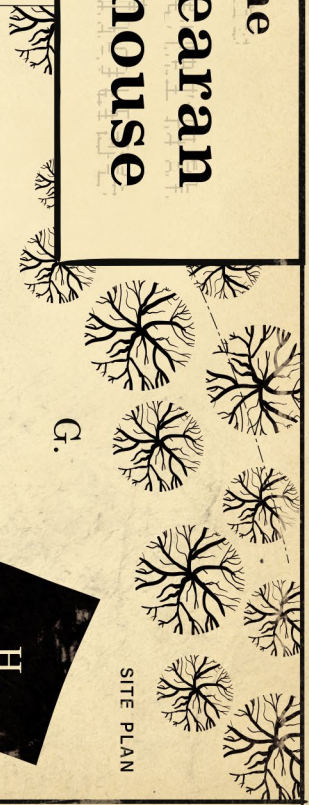


FIRST FLOOR

- A. Bedroom 1
- B. Bedroom 2
- C. Hallway
- D. Kitchen
- E. Bedroom/Parlor
- F. Fireplace
- G. Sugar Maple Forest
- H. Barn
- I. Flower Bed
- J. Outhouse
- K. Farmhouse
- L. Road to Cobb's Corners



ON-GRADE ELEVATION



SITE PLAN



DRAWN BY:  
CHECKED BY:

## MACLEARAN FARMHOUSE

ELLIS BROOK ROAD

WINDHAM COUNTY

SURVEY NO.  
HABS  
FL - 607

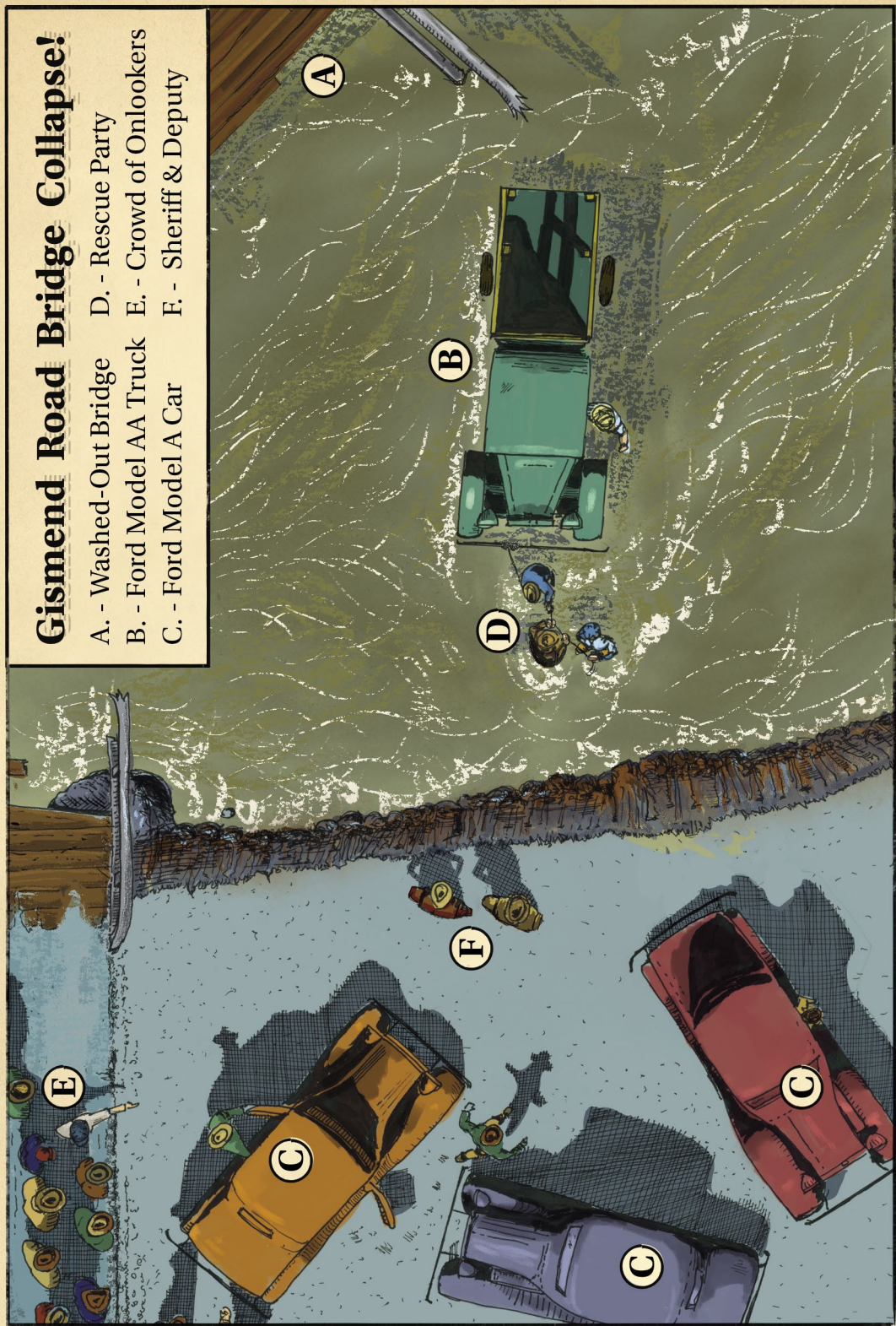
HISTORIC AMERICAN  
BUILDING SOCIETY  
SHEET 1 OF 2 SHEETS

LIBRARY OF CONGRESS  
BOOK NUMBER



## Gismend Road Bridge Collapse!

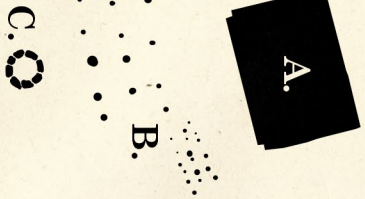
- A. - Washed-Out Bridge      D. - Rescue Party  
B. - Ford Model AA Truck    E. - Crowd of Onlookers  
C. - Ford Model A Car        F. - Sheriff & Deputy





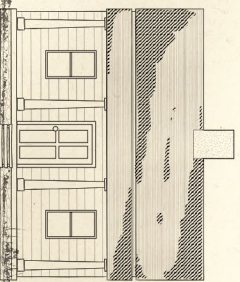
SITE PLAN

- A. Shack
- B. Garden
- C. Stone Well

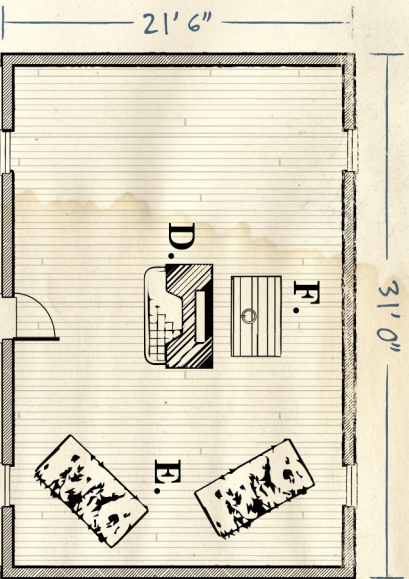


# The Shack

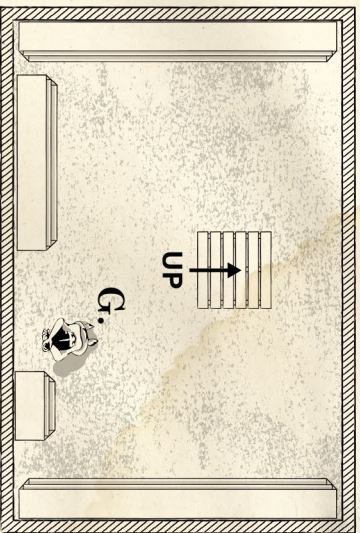
- D. Chimney Stack
- E. Straw Mattresses
- F. Trap Door
- G. Emily



ON-GRADE ELEVATION



GROUND FLOOR



ROOT CELLAR

## SHACK

DRAWN BY.

VALLEY VIEW ROAD

WINDHAM COUNTY

SURVEY NO.  
**HABS**  
FL - 838

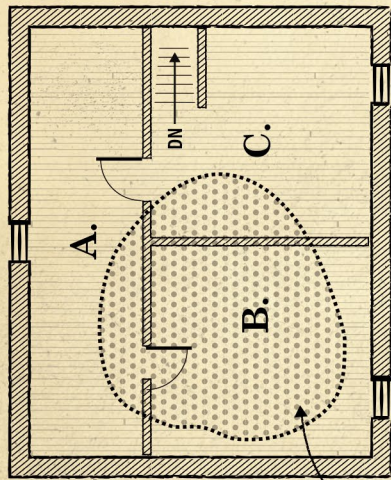
HISTORIC AMERICAN  
BUILDING SOCIETY  
SHEET **2** OF **2** SHEETS

LIBRARY OF CONGRESS  
INDEX NUMBER

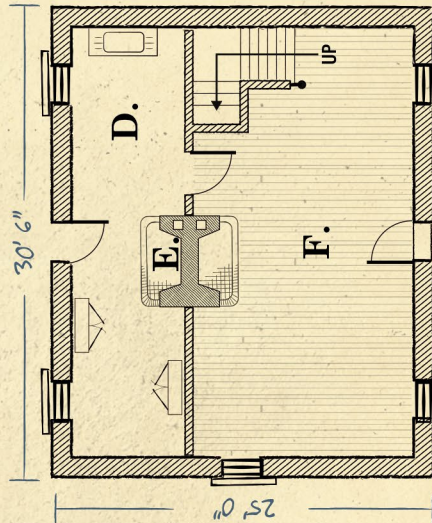


**DESERTED SHACK**  
**Aylesbury Pike**  
**Outside Arkham, Ma.**

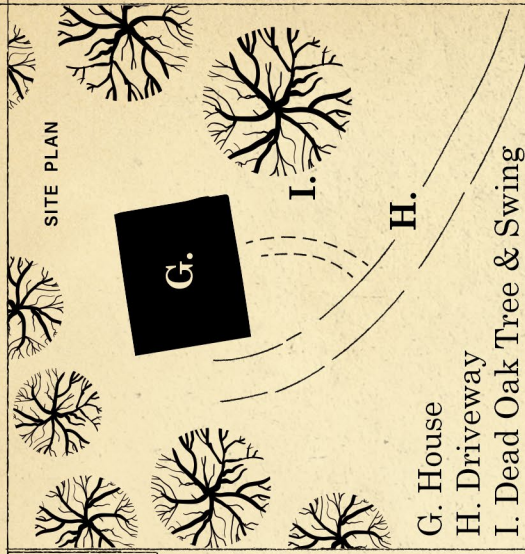
- A. Hallway
- B. Corpse Room
- C. Room 2
- D. Kitchen
- E. Fireplace
- F. Front Room



**SECOND FLOOR**

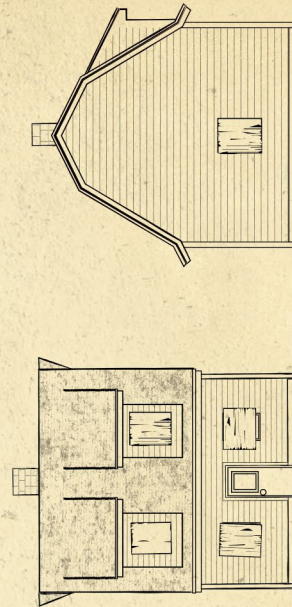


**FIRST FLOOR**



- G. House
- H. Driveway
- I. Dead Oak Tree & Swing

**SITE PLAN**



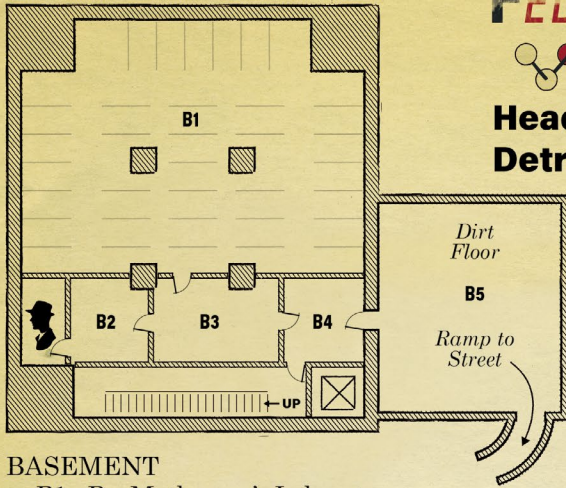
**ON-GRADE ELEVATION**

**WEST ELEVATION**



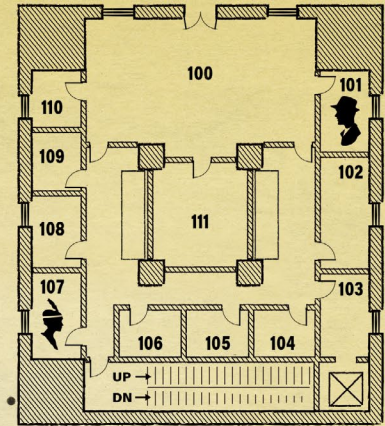
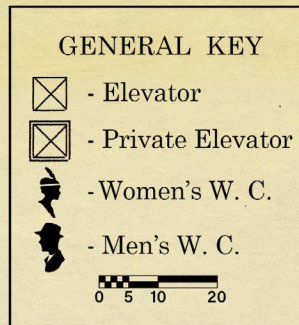
# FEDERATED & OIL CHEMICAL

## Headquarters Building Detroit, Michigan



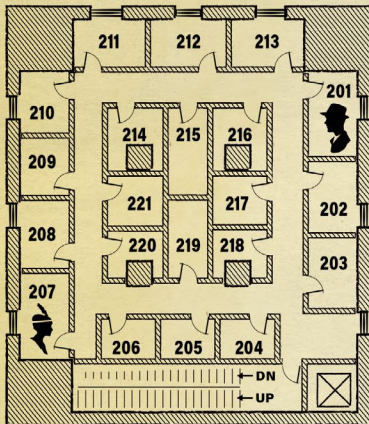
### BASEMENT

B1 - Dr. Matherson's Laboratory  
B2 - Office  
B3 - Lobby for Research Dept.  
B5 - Underground Parking



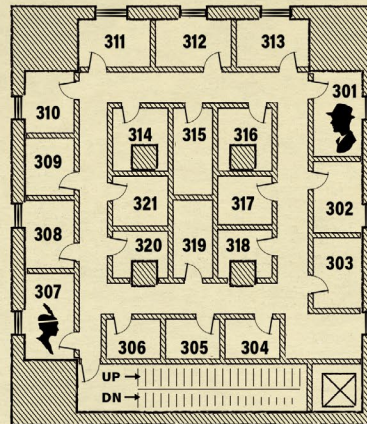
### FIRST FLOOR: OFFICES

100 - Grand Reception Lobby  
102 - 110 - Offices  
111 - Vault Storage



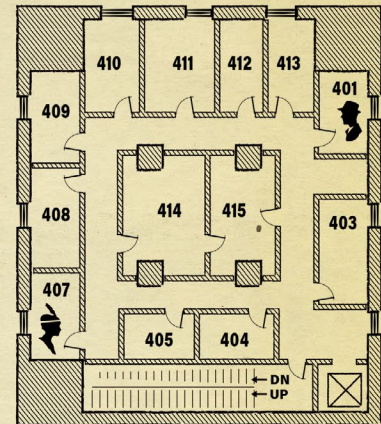
### SECOND FLOOR: OFFICES

202 - 206, 208 - 221 - Offices



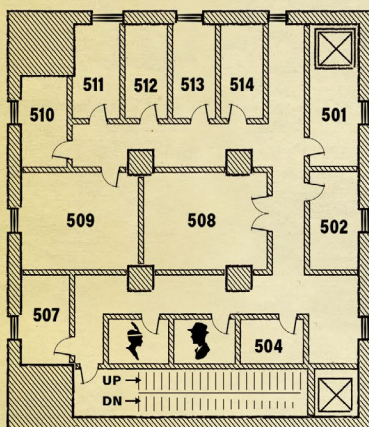
### THIRD FLOOR: OFFICES

302 - 306, 308 - 321 - Offices



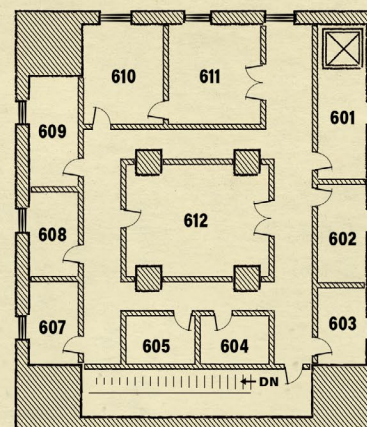
### FOURTH FLOOR: STAFF

408 - Laundry  
409 - 413 - Staff Quarters  
414 - Kitchen  
415 - Mess



### FIFTH FLOOR: GUESTS

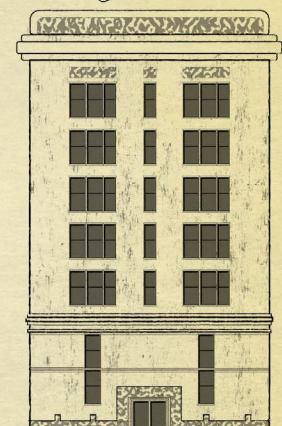
501 - Private Elevator Access  
502, 504, 507 - Guest Quarters  
508 - Conference Room  
509 - Library  
510-514 - Guest Quarters



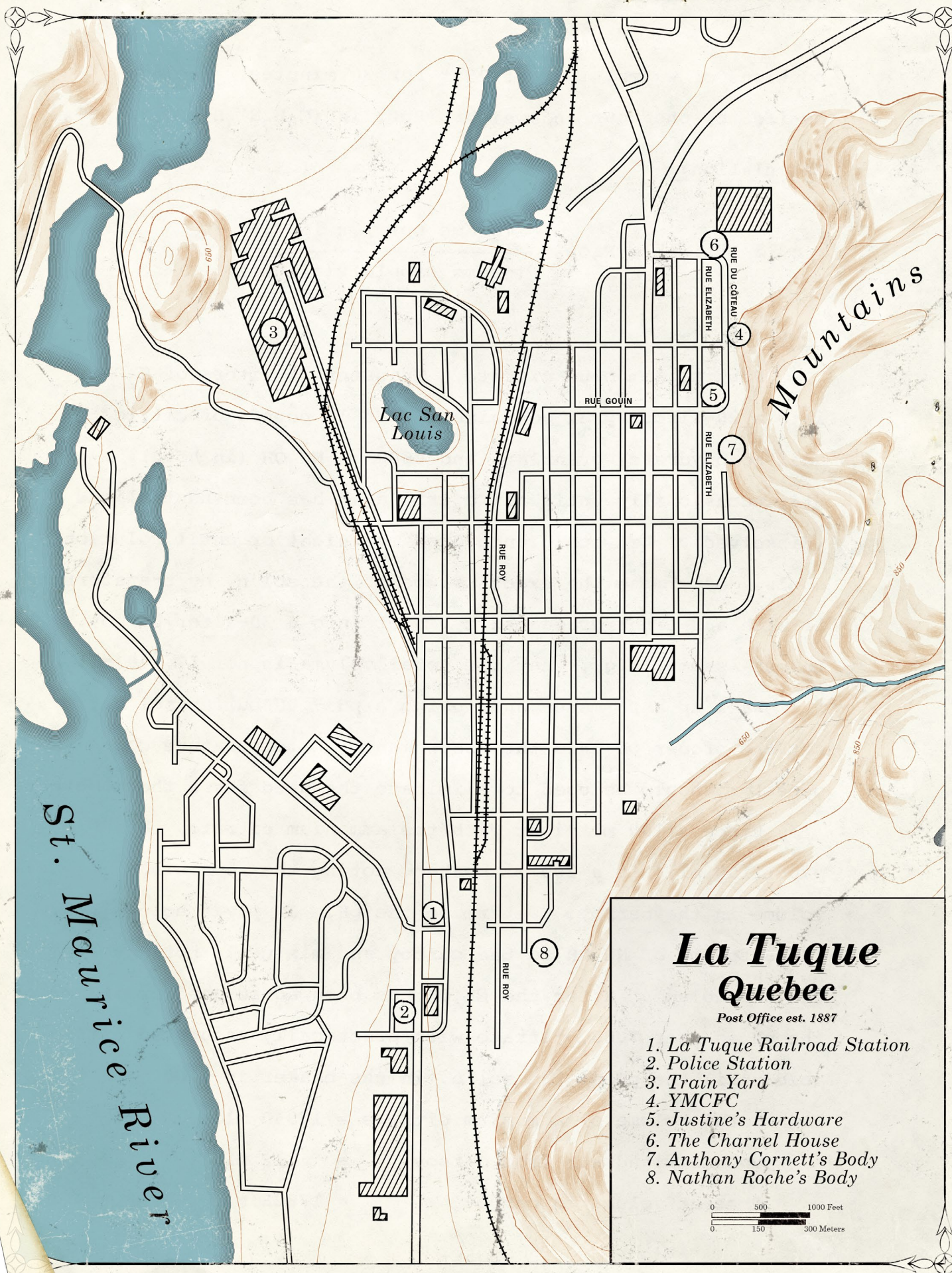
### SIXTH FLOOR: ABELARD'S

#### PRIVATE RESIDENCE

601 - Guardroom 611 - Master Bedroom  
609 - Kitchen 612 - Formal Dining  
610 - Parlor and Gallery







## La Tuque Quebec

Post Office est. 1887

1. La Tuque Railroad Station
2. Police Station
3. Train Yard
4. YMCFC
5. Justine's Hardware
6. The Charnel House
7. Anthony Cornett's Body
8. Nathan Roche's Body

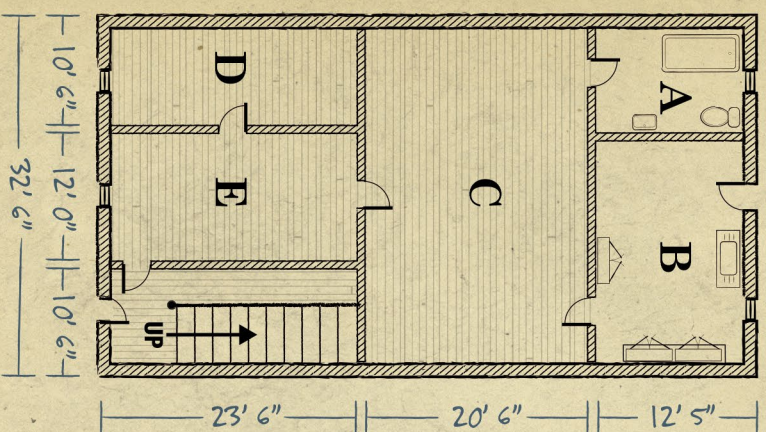
0 500 1000 Feet  
0 150 300 Meters



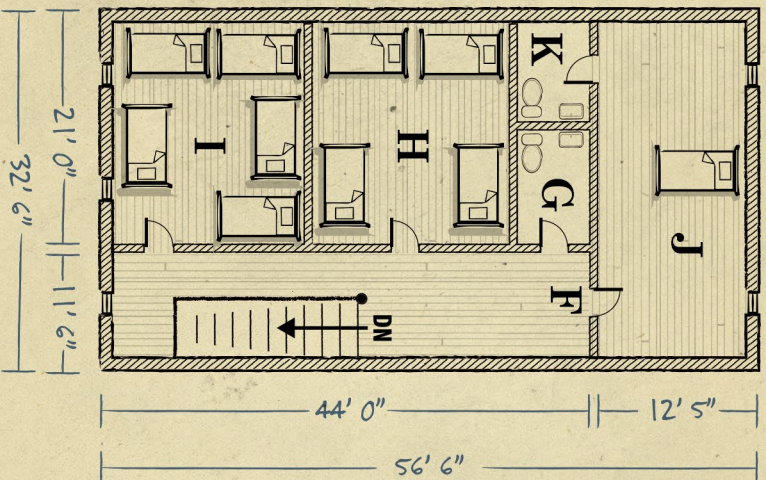
# Y.M.C.F.C.

No. 12 Rue du Côteau

FIRST FLOOR



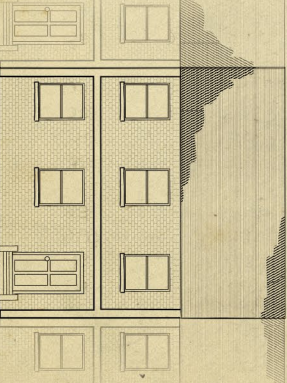
SECOND FLOOR



- A. Bathroom
- B. Kitchen
- C. Main Room
- D. Dubois' Office
- E. Hall
- F. Locked Door
- G. Bathroom
- H. Dormitory 1
- I. Dormitory 2
- J. Dubois' Bedroom
- K. Dubois' Bathroom



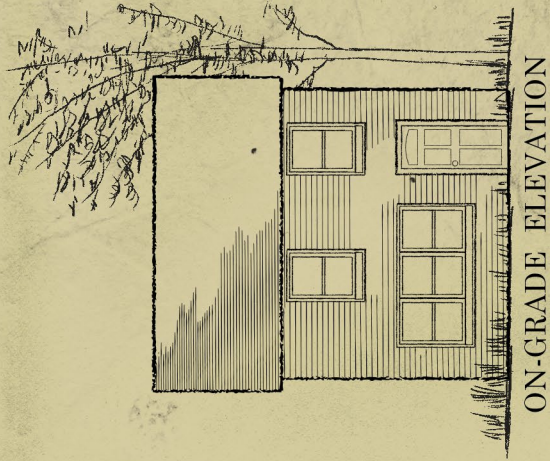
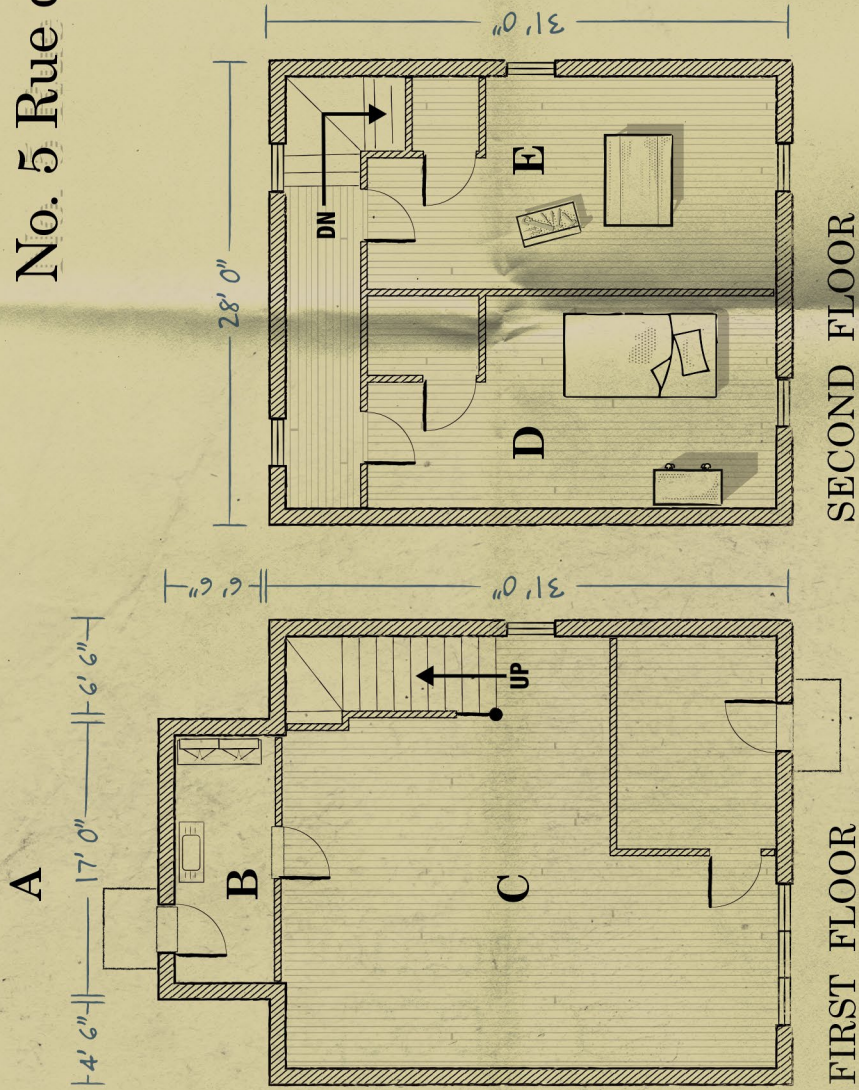
ON-GRADE ELEVATION





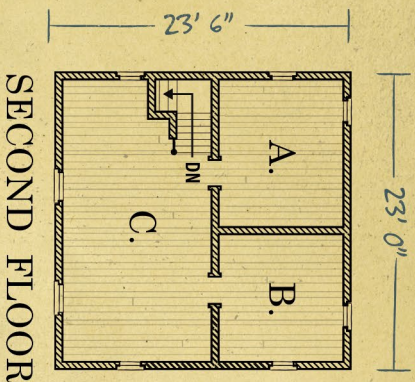
# No. 5 Rue de Cardinal Léger

- A. Backyard
- B. Kitchen
- C. Main Room
- D. Bedroom 1
- E. Bedroom 2

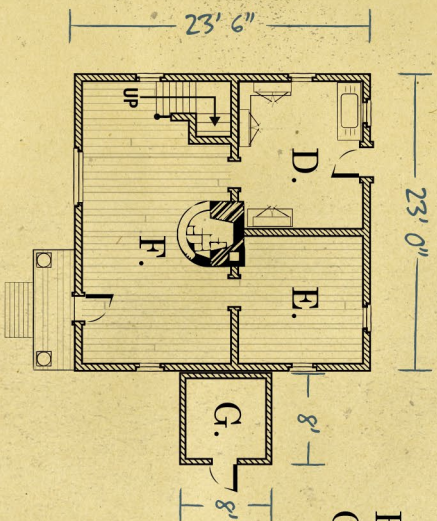




# The MacLearnan Farmhouse



SECOND FLOOR



FIRST FLOOR

- A. Bedroom 1
- B. Bedroom 2
- C. Hallway
- D. Kitchen
- E. Bedroom/Parlor
- F. Fireplace
- G. Generator Shed

- H. Fuel Bunker
- I. Sugar Maple Forest
- J. Barn
- K. Flower Bed
- L. Outhouse
- M. New Outhouse
- N. Farmhouse
- O. Road to Cobb's Corners



DRAWN BY:  
CHECKED BY: MORRISON

MACLEARNAN FARMHOUSE  
ELLIS BROOK ROAD  
WINDHAM COUNTY

SURVEY NO.  
HABS  
FL - 607

HISTORIC AMERICAN BUILDING SOCIETY  
SHEET 1 OF 2 SHEETS

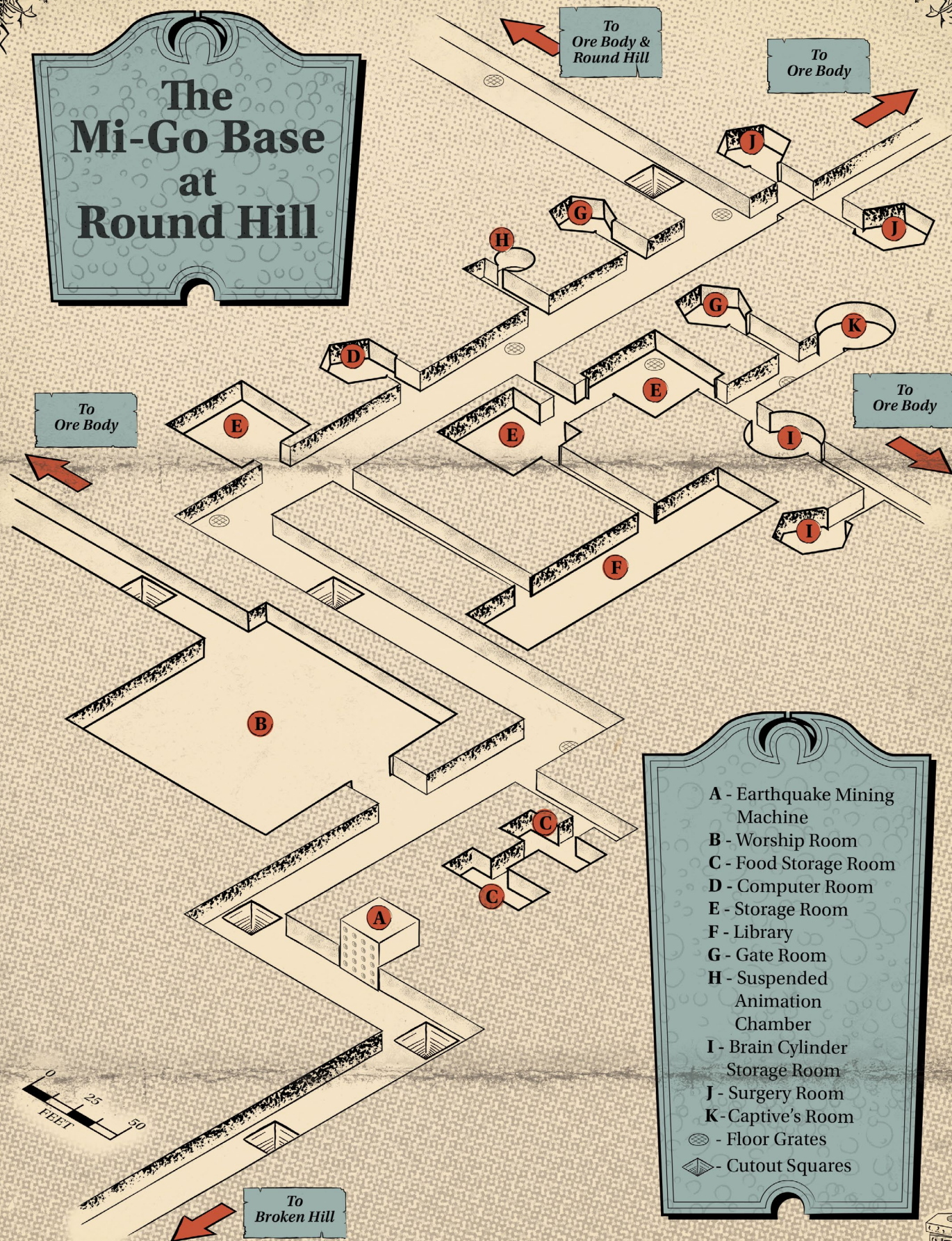
LIBRARY OF CONGRESS  
INDEX NUMBER

SITE PLAN





# The Mi-Go Base at Round Hill



- A - Earthquake Mining Machine
- B - Worship Room
- C - Food Storage Room
- D - Computer Room
- E - Storage Room
- F - Library
- G - Gate Room
- H - Suspended Animation Chamber
- I - Brain Cylinder Storage Room
- J - Surgery Room
- K - Captive's Room
- ⊗ - Floor Grates
- ◊ - Cutout Squares





View of  
**COBB'S CORNERS**  
VERMONT  
est. 1787

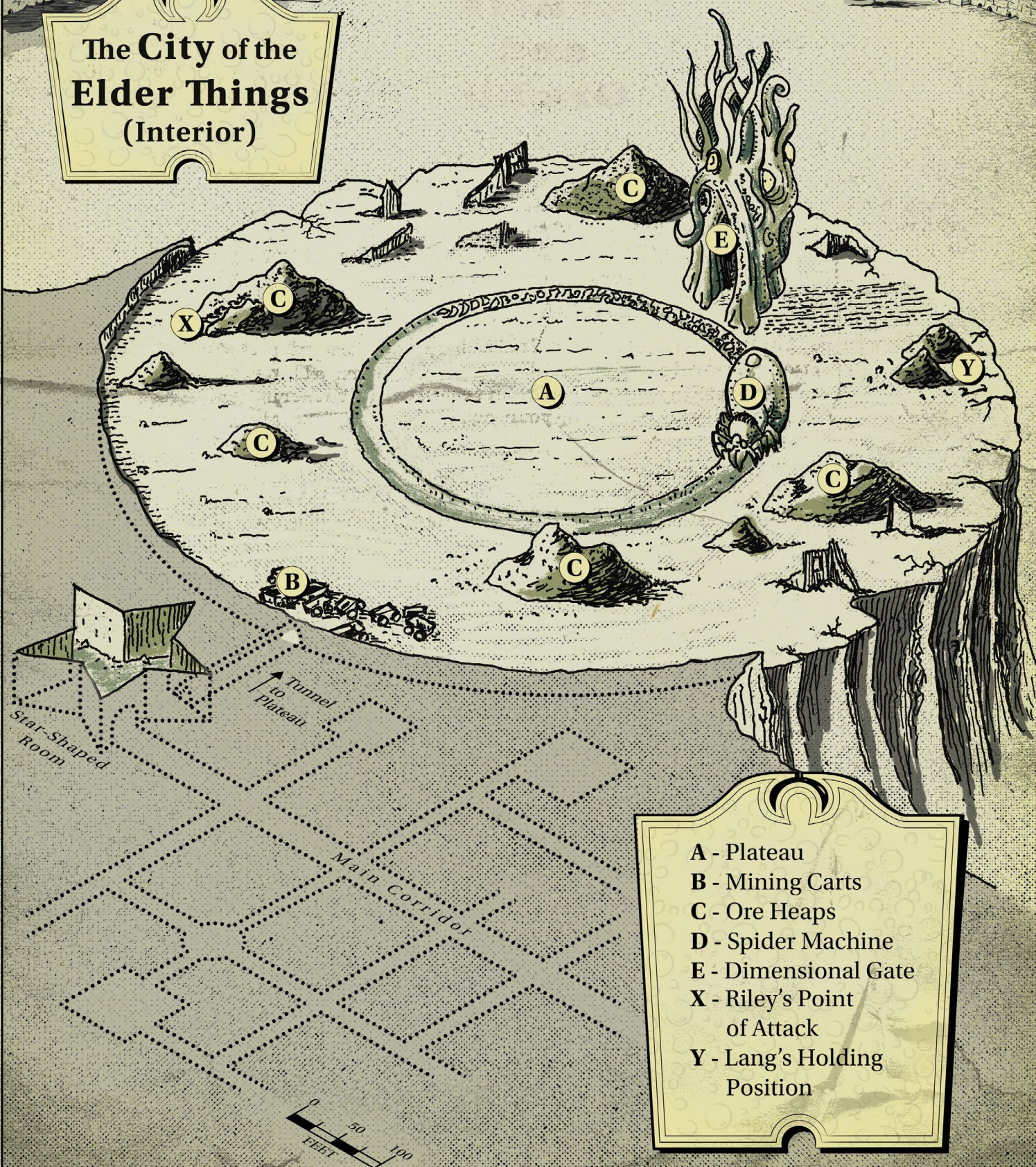
*Advertising Directory*

1. Gismend Road Bridge
2. Public Library
3. Cobb's Corners Gazette
4. Karner's Goods
5. Sheriff's Office
6. Bridge
7. Town Hall
8. Civil War Memorial
9. Dr. Owen Perry's Home  
and Practice
10. Jim's Grill
11. School
12. First Baptist Church  
of the Divine Ascension
13. Deputy Cutter's House
14. Book Pyre
15. Ritual Summoning Site





# The City of the Elder Things (Interior)



- A - Plateau
- B - Mining Carts
- C - Ore Heaps
- D - Spider Machine
- E - Dimensional Gate
- X - Riley's Point of Attack
- Y - Lang's Holding Position